

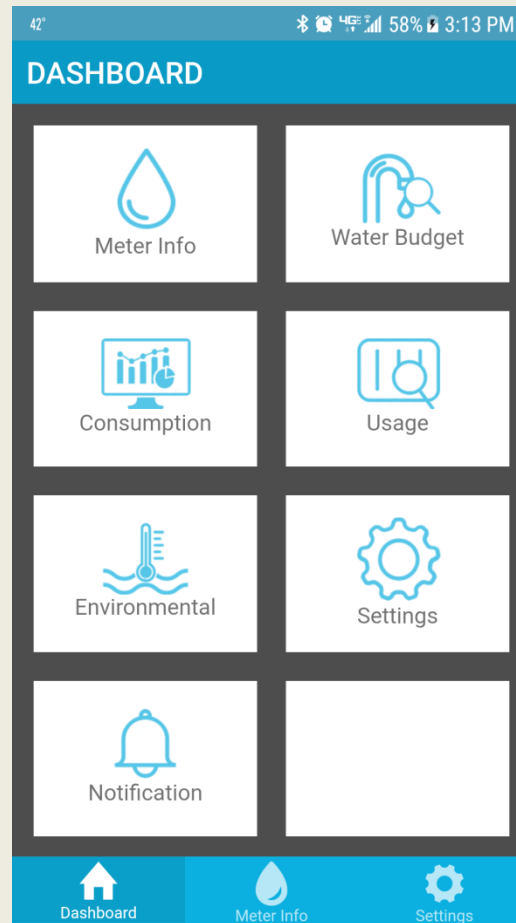
WaterScope Mobile App Consumer Dashboard

- Meter Reading Screen/Alarms

- Meter Datalog/Usage Volume

- Max/Min Temperature Graph with Timestamp

- Consumer (Customizable) Account Alarm and Notification Activation



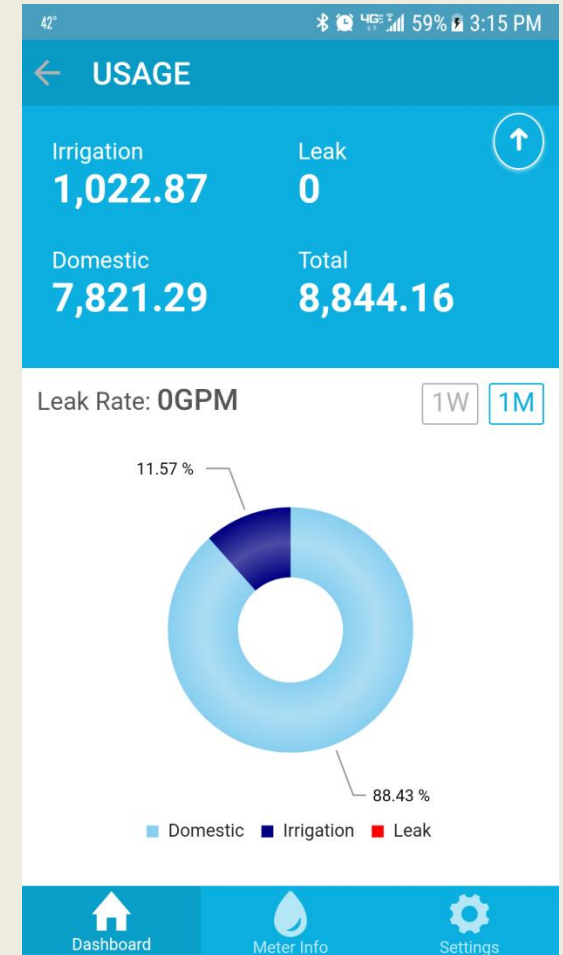
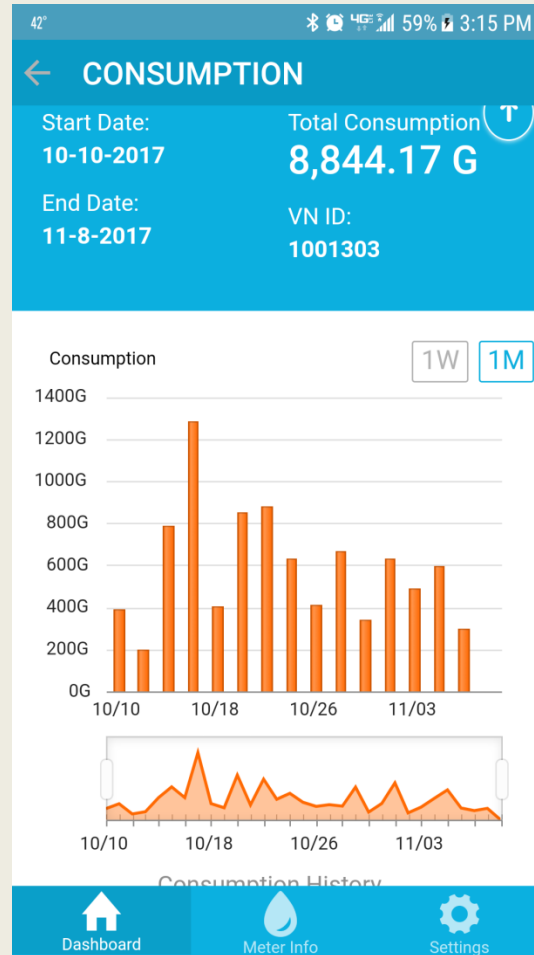
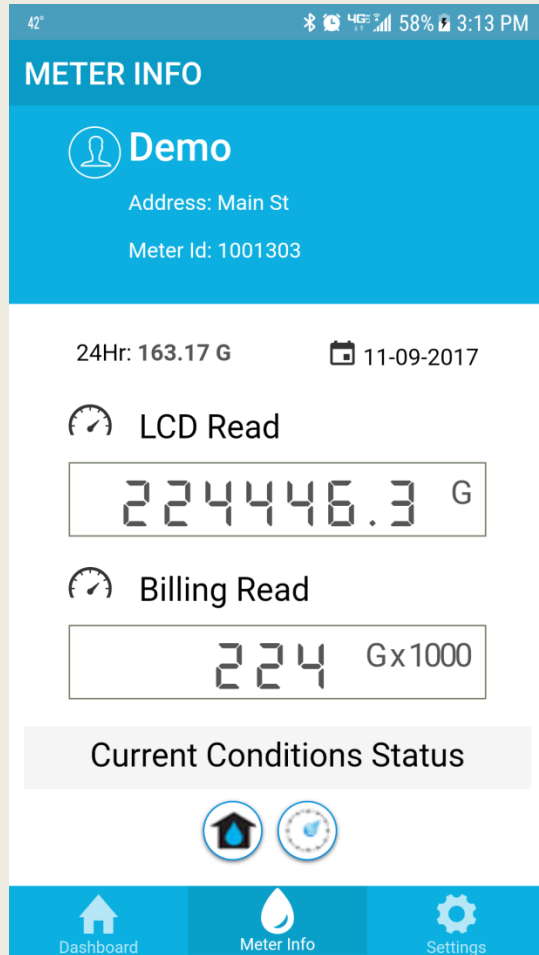
- Establish Monthly Water Usage Budget. Track Progress thru Billing Cycle

- Consumption Detail as Percentage of Use (Domestic/Leak/Irrigation)

- Account Data/Website Links

Waterscope Mobile App

Home Owner Meter Reading and Usage Screens



Waterscope Mobile App

Consumer Alarm Settings Screens

Each individual account owner can enable/disable applicable alarms per meter

Email summary of actual use versus budgeted use

User can select which conditions to monitor or disable. Leaks, intermittent toilet leaks, unexpected consumption and adherence to water conservation guidelines

42° 59% 3:16 PM

← NOTIFICATION SETTING

Notification Unexpected

mkosorok@metronfarnier.com

- ☒ Cycle Summary
- ☒ Leak
- ☒ Intermittent Leak
- ☒ High Usage
- ☐ Unexpected Use
- ☒ Watering Restriction Violation
- ☒ Time Restriction Violation

Dashboard Meter Info Settings

42° 60% 3:17 PM

← NOTIFICATION SETTING

Notification Unexpected

☒ Select Date Interval

Start Date End Date

12/23/2017 12/27/2017

☒ Select Days

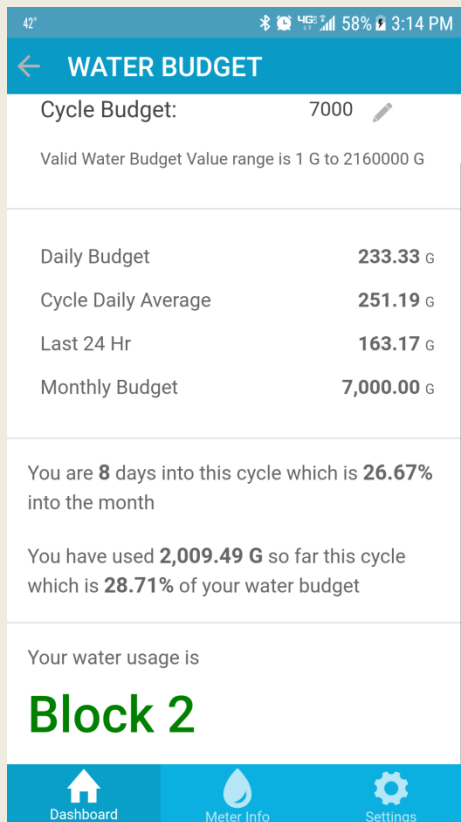
- ☒ Friday
- ☐ Monday
- ☐ Saturday
- ☐ Sunday
- ☒ Thursday
- ☒ Tuesday
- ☒ Wednesday

Save

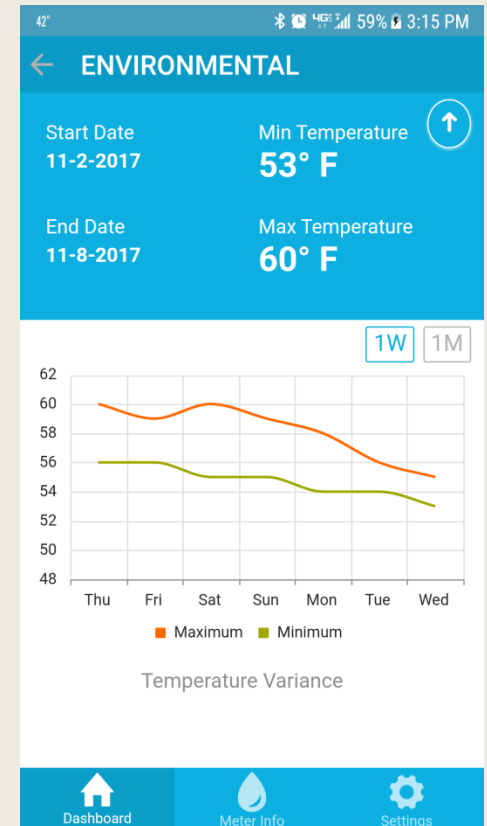
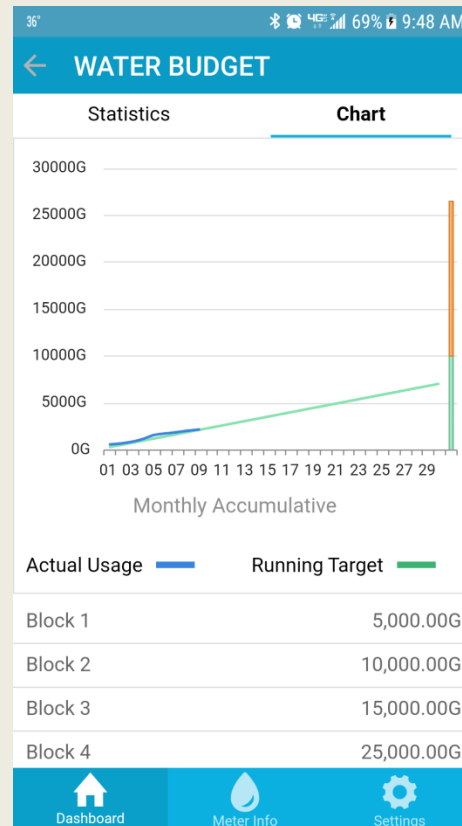
Dashboard Meter Info Settings

End-users can customize system to monitor for unexpected use. For example, if a homeowner is going on vacation they can program a begin/end date and provide an email alert if water is used while the homeowner's are away. Clauses are available for irrigation days to override the vacation start/end dates.

Waterscope Water Budget for Homeowners



Within the App, consumer accounts can setup a monthly budget expectation that syncs with each billing cycle. The App provides daily updates on usage compared to monthly budget and *projected* water rate tier at the end of the cycle. Consumer can also request an email with the final summary of use versus budget each month.



Each meter has an ambient temperature sensor for the meter pit/vault that is transmitted to the cloud each day.